



K-STATE

Research and Extension
Master Gardener

NOVEMBER 2023
www.maraisdescygnnes.ksu.edu

What's Growing On . . .

The latest news from the
Marais des Cygnés Extension Master Gardeners

Paola Office: 913 N. Pearl (Old KC Road), Paola, KS 66071 | 913-294-4306
Mound City Office: 115 S. 6th St., Mound City, KS 66056 | 913-294-2829

HOLIDAY HAPPINESS
Donations due to the office by
December 8th!

INSIDE THIS ISSUE:

- News and Notes 2
- Holiday Happiness page 3
- AT at Vinland Valley page 4
- Reminder page 4
- Garden Spotlight page 5
- AT Schedule page 6
- Happy Ending page 6

CALENDAR

- November 28** – RSVP for Lunch for Wreaths for Residents
- November 29** – Set Up for Wreaths for Residents – 1:30 p.m.
- November 30** – Wreaths for Residents – 9:30 a.m.
- December 6** – K-State Webinar
- December 4** – Trial Garden Review and 2024 Planning – 9:00 a.m. We're trying to find a location for this . . . stay tuned . . .
- December 7** – AT: Adapting Tomatoes
- December 8** – Holiday Happiness Donation Due
- December 12** – EMG Advisory Board Meeting – 9:30 a.m.

The Newsletter deadline is Noon on Thursday following the Tuesday Board meetings.

The 2023 Advanced Training schedule is on page 5. Please see the schedule for details on each opportunity. Watch for new programs as they are added.

2024 Garden Symposium Meeting

By Janette Everhart

The first committee meeting was held on September 12th with several of our members in attendance. This is our 8th Annual Symposium!

We have selected a new venue this year. The symposium will be held at Living Proof Church off of 169 and 327th Street. The table layout will be a mixture of using rented round tables on the floor and rectangular tables on risers so we can support 240 attendees. (Rena T. has been working on the layout!) We have also needed to change the date. The Symposium will be held on February 17th. Check in will begin at 8:30am. The remaining hours are from 9:00 to 3:30.

Our theme this year is: **"Inspirations: Why do You Garden?"** We have secured our four speakers. "Love of Food", Jan Stefanchik, JOCO EMG2, Love of Beauty: Kathi Mecham Carroll, County Ext Horticulture Agent, Love of Native Plants: Dr. Sharon Ashworth, DOCO Hort Agent, and Love of Native Pollinators: Tamra Reall, MU-GKC Ext Horticulture Agent and Kansas City Gardener columnists.

All speakers have confirmed and will be submitting profile information and photos to Lenora. Lenora will work with Anita to prepare ads for the Kansas City Gardener as well as handouts for the packets.

Paola country Club will provide our lunches again. We will also provide a continental breakfast and afternoon snacks for attendees.

There will be door prizes again, we have received some donations and are looking for more to gift to our guests. If you are interested please contact Carol

Vandenburg at: kansaswego@yahoo.com. (We know several of you have great talents, don't be shy, i.e. barn quilts, short spirit pole, plants, art, baskets, well you get the idea . . . !!)

On line registration is active. You can preregister at: <https://tinyurl.com/2024MdCEMGSymposium> Everyone who attends the symposium MUST register! The only exception is EMG members who are working during the entire symposium. We have managed to keep the price at \$45.00 per person despite cost increases. All MdC EMG attendees will receive 5 hours of AT. You can also mail/or take a check to the extension office if you don't want to pay on line at the time of registration. However, checks MUST be received at the office no later than January 29th. Anita has posted a "teaser" to our Facebook page, please share. There will be more to follow. (Keep sharing.)

If you wish to become more involved, please join our awesome committee. We still have a lot of planning and preparation to do or you can cook yummy treats for the attendees. You can also volunteer on the day of the event. We will have a sign up page when we get closer to the time of the symposium. This is a great way to start the year with some volunteer hours!!

Thanks to our fabulous committee who have been working to pull our planning together. It is truly a team effort! Join us to learn and have fun while helping to provide a wonderful learning experience for both novice and avid gardeners alike. 🌸🌸🌸🌸

Advisory Board**Chairman** — Jan Thompson**Vice Chairman** — Janette Everhart**Secretary** – Anita Boyett-Voke**Treasurer** – Billie Lenz**Members at Large**

Helen Kloepper

Barbara Shropshire

Vickie Vetter-Scruggs

Committees**Courthouse Garden**

Phyllis Benedict &

Helen Kloepper

Trial Garden

Shirley New & Chet McLaughlin

KSU Extension Office Garden

Sue Burns

Advanced Training

Barbara Shropshire

Awards BanquetDonna Cook, Susan Thompson &
Betsy Hasselquist**Symposium 2024**

Janette Everhart

Plant Sale 2024Sue Burns, Stacie Campbell
& Lenora Larson**Garden Tour**

Helen Kloepper

Publicity

Lenora Larson

Seeds for Kids

Betsy Hasselquist

Social Media/Newsletter

Anita Boyett-Voke

Miami County FairChet McLaughlin & *Your Name Here***New Recruits/Mentors**

Becky Thorpe

Newspaper Articles

Katelyn Barthol,

Extension Agent

Send news and photos to:

Anita Boyett-Voke,

Newsletter Editor

abvoke@yahoo.com

● The **Trial Garden Committee** would like to invite all interested EMG members to meet on **Monday, December 4th at 9:00 a.m.** at the Jackson Hotel. They will be reviewing 2023 and planning for 2024. If you are interested in a plot as Dennise and Carol W. had this past year, wanting to increase size of flower garden, please plan to attend as well as all those that want to volunteer for the trial garden project.

● Please remember that our **Holiday Happiness project** donations are due at the Extension Office by Friday, December 8th. EMG is donating \$1,000 and EMG members can donate via cash or check, payable to EMG. We will divide equally between three food pantries: Osawatomie, LaCygne and Spring Hill.

● Billie has done an outstanding job as our EMG Treasurer. Our finances are in great order! We had the **Annual Financial Review** on November 14th and all aspects were reviewed and matched as they should. A big thank you to Anita B-V., Carol V., Janette E., Betsy H. and Jan T. for reviewing the bank statements, bank deposits, check book registers, etc. for 2023.

● The Board approved the following **donations for our advanced training opportunities**. We donated \$100 for the

K-State Webinar Zoom expense, \$50 for Deep Root and \$50 for the Johnson County Speakers Bureau. If you are not familiar with the K-State Webinar or DeepRoot.org, they have fantastic advanced training opportunities.

● Many of our EMG members are very familiar with **Chet's loyal buddy**, Beau. We're sad to report that Beau the dachshund passed last week. A loyal companion for 14 years.

● Our **2nd annual wreath-making event** for Vintage Park – Paola is on Thursday, November 30th at 9:30 a.m. at Paola Extension office. Please bring any holiday-type decorations to the extension office prior to that Thursday for use making the wreaths. We'll also have a cookie exchange that morning as in addition to lunch provided by the MdC EMG. Please *RSVP to the extension office* by Tuesday, November 28th: 913-294-4306. If anyone would like to help Becky set up this project, please join Becky at 1:30 at the extension office on **Wednesday, November 29th**.

● We need to fill the **Superintendent of the Open Class Floriculture for the Miami County Fair in 2024**. Sue B. has handled that responsibility for several years but is not able to this year. Please contact Jan T. or Katelyn if you are interested or have any questions.

8th Annual Garden Symposium**“Gardening Inspirations”****Four Speakers – Four Topics**

- Growing Food
- Garden Beauty
- Native Pollinators
- Native Plants

February 17th, 2024 from 8:30 to 3:30

You can register via the below link!

More details coming soon!!

Presented by:

K-STATE
Research and ExtensionMaster Gardener
Marais des Cygnes District***This is our teaser ad for Facebook, please go to our page if you wish to register.***



Holiday Happiness

By Anita Boyett-Voke

Why give money to the food pantries you ask? While canned goods and fresh produce is a good way to help local food pantries, cash donations are equally important. When food is donated you're directly feeding people but it can also create a large volume of groceries that will need to be stored, categorized and distributed.

Cash donations help pay for warehouse expenses such as electricity and rent. The space also needs to be kept clean and neat and centrally located to make them accessible.

The MdC EMGs donate produce from the trial garden every year and these are most welcome donations. Cash can help a food bank purchase in bulk and they have a knowledge of the immediate needs/requirements of the communities they are serving.

Many of the workers at the food banks are volunteers. However, every food bank needs a staff of trained people on payroll who can organize donations, manage volunteers, fundraise and handle visitors and food distribution.

The office manager needs to be reliable and knowledgeable.

Cash donations help train and support the people who make the food pantries possible. Cash donations are as important as food donations. The Marais des Cygnes Master Gardeners have been making cash donations to three of our local food pantries for the past several years. Your additional donation not only makes a difference it is also a great way to give back to those in need, we have such a generous group, thank you to everyone who participates in this annual giving event.

The Oz Food Pantry is located at 811 6th Street (next to the Senior Center) Osawatomie, KS 66064 (Next to the Senior Center) Phone: 913.755.2146. You can visit them on Facebook: <https://www.facebook.com/profile.php?id=100069984954091>

The Spring Hill Food Pantry is located at Life Spring Church. 210 N Webster St., Spring Hill, KS info@lifespringhill.org, 913.592.5433.

The Pantry provides food to those in need living in cities with the following zip codes: 66083, 6606.

You can visit them on Facebook: <https://www.facebook.com/springhillfoodpantry>

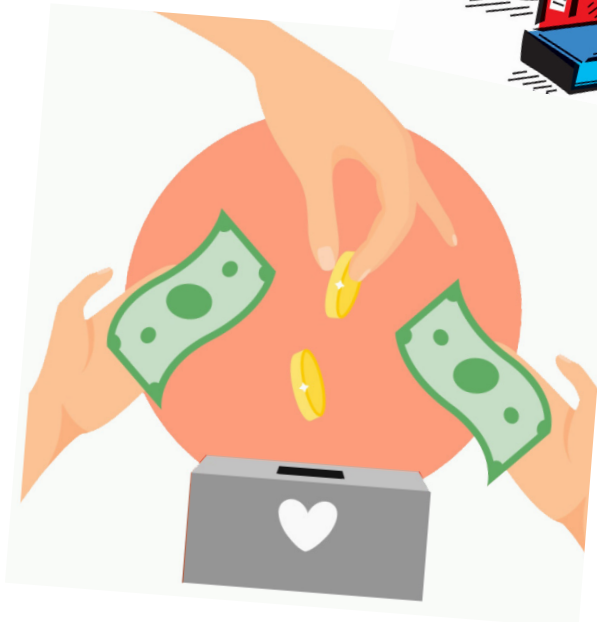
The La Cygne UMC Food Pantry is located at 402 Chestnut St.,

La Cygne, KS 66040
Phone: 913.757.2732.

The pantry is a community project located behind the Methodist Church.



Food Pantry Needs



AT at Vinland Valley

By Barb Shropshire

The MdC EMGs recently enjoyed a trip to Baldwin's Vinland Valley Nursery on a perfect fall day for an AT session. We learned how to build a wildlife bridge through our landscape choices to help provide the habitat to attract more wildlife in our own backyard! We started with walking through the nursery taking note of the many plant, shrub and tree selections that were available. We then sat in a covered outdoor class area where nursery owner Amy Albright gave instructions on designing for wildlife using primarily native plants in our landscape plan. Amy supplied grid paper for us to first draw out the area we wanted to design using our prepared measurements and existing landscape features and plants.

Consideration of sunlight and drainage conditions were to be used in selecting appropriate plants from the extensive plant lists we were supplied. Next, we were to add the largest trees, shrubs and then perennial plant groupings to our design. The nursery's landscape templates were available for setting in the garden shapes.

Amy's suggestions for choosing our plant selections were to think about the view when looking out the windows, seasonal bloom time, and using as

many insect host plants as possible. Keystone native plants were emphasized to choose for our region. These are host plants that feed the young caterpillars of about 90% of butterflies and moths and the plants that feed our native bees. Amy also recommended Lenora Larson's host plant lists, easy to find on the Vinland Valley website.

The EMGs attending the AT class left with a wealth of information including many other recommended websites to help with choosing new plants in the creation of a landscape design plan. We learned that once our design is installed, we can register our garden as a Monarch Waystation, Certified Wildlife Habitat or Homegrown National Park. Our group was inspired to design a new area to prepare for next year's garden addition. This will enable us to help restore a wildlife habitat right in our own backyards!



Volunteer Reminder

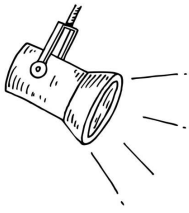
Our EMG members have put in a lot of volunteer hours for 2023. Katelyn printed the listing this week and we have several members that have entered few and/or no volunteer hours!!

Please take time and enter your hours as we have numerous accomplishments for 2023. We are a small but extremely active group. It's *immesley important* to show what impact the Marais des Cygnes Master Gardeners have in our community.

If you need help or have any questions, please contact Katelyn. So appreciate your help in showcasing the Marais des Cygnes Master Gardeners!

Thank you!!
Jan Thompson, Chairperson





Mound City Courthouse Gardens

By Laraine Crawford

The Mound City Courthouse Gardens Project began in the fall of 2021 with Kristy Schmitz's (an employee at the courthouse) idea of having plantings around the Mound City Courthouse similar to the Miami County Courthouse Gardens. Laraine Crawford, Phyllis Benedict and Janette Bennett formed a committee to start the project.

Phase 1 was completed in 2022. It consisted of a southeast bed and a circular bed at the busy entrance to the courthouse. Colorful eye-catching plants such as rudbeckia, yellow knockout roses, peonies and nepeta were planted along with a "rising sun" redbud. Because Phase 1 was received so well, the Commissioners decided we should do more gardens, specifically the front, the north side of the building.

Phase 2 was completed in 2023. This was a HUGE project of 2 40 foot gardens on either side of the front steps. Dead trees and large old shrubs had to be removed. A wall needed constructed and drainage relocated. Next we brought in truckloads of soil which we amended with compost and peat moss. Finally we planted the purchased nursery items to fulfill the design. Plants in this phase were shade

plants: pink Kousa and white Kousa dogwoods, hostas, hydrangeas, hardy begonias, impatiens and tall phlox. Gradually soaker hoses were added as well as mulch and the wrought-iron fence. Someone even had a wedding on the steps between the 2 symmetrical gardens already!

Phase 3 is now being considered for 2024. One area is at the signs by the road at the north of the courthouse building. The other area is a southwest bed across from the Phase 1 bed.

None of these gardens could have been done without the hard work and enthusiasm of Kristy and our group of master gardeners. We were very fortunate to have Monica Chapman and Theresa Barr, who both live near the Mound City Courthouse, join the project. Besides working on Phase 2, they are both maintaining all the gardens there. Special thanks to Bill Vandenberg for his help on Phase 2.

This has truly been an enjoyable project using plants to make the Mound City Courthouse grounds beautiful and memorable.



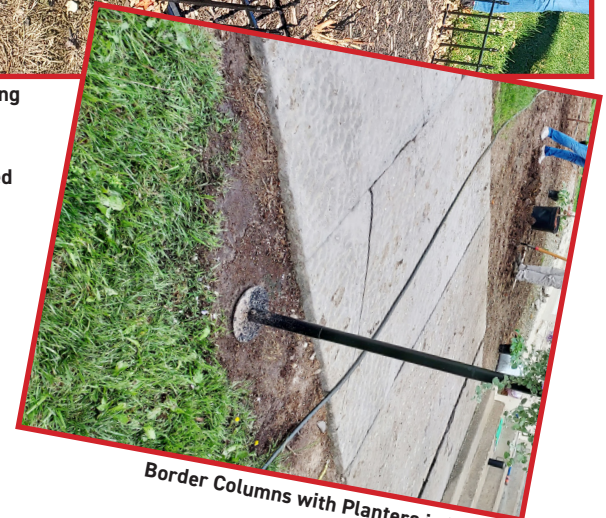
Phase 2 Garden on North Side of Courthouse Building.



Wrought iron fencing

Workers who planted Phase 2:

L-R: Phyllis B.
Janette B.
Bill V.
Kristy's husband
Theresa B.
Kristy S.
Monica C.
Laraine C.



Border Columns with Planters in Phase 2

2023 Marais des Cygnes Extension Master Gardener Advanced Training

Please note: More training opportunities will be added throughout the year as they are scheduled.

Mo	Date	Time	# Hr	Topic	Speaker	
Dec.	7	11:30 AM	1	"Adapting Our Tomato-growing Techniques to Our Changing Climate"	Cary Rivard, Prof. of Horticulture, Natural Resources Extension Specialist, Dir. Of Olathe Horticulture Center	WY Co. Extension Office, 1208 N. 79th St., KC, KS
<p>To join K-State Garden Hour, 12 PM 1st Wed. of each month. Register here for 2023: http://hnr.ksu.edu/GardenHour Dec. 6 - Beekeeping Basics: How to Start Your Own Colony Lunch and Learn, 12:00 PM, Every 1st Thursday of the month. Native Plants at Noon, 12:00 PM, Every 3rd Thursday. Register for both webinars at deeproots.org (past recordings available on website)</p>						
MdC Training Hours			Other Training Hours		Red denotes new training or updated information	

YEAR END AT INFORMATION

The last K-State Garden Hour webinar is Dec. 6 - Beekeeping Basics: How to Start Your Own Colony

If you need more Advanced Training hours, past recordings are available on the K-state Garden Hour and Deep Roots websites:

To join K-State Garden Hour, 12 PM 1st Wed. of each month. Register here for 2023: <http://hnr.ksu.edu/GardenHour>

Lunch and Learn, 12:00 PM, Every 1st Thursday of the month. Native Plants at Noon, 12:00 PM, Every 3rd Thursday.

Register for both webinars at deeproots.org (past recordings available on website)

If you have any suggestions for future Advanced Training topics, please email to Barb at barbshrops@gmail.com.

Happy Ending!!

When EMG Judy Moser passed on April 20, 2023, the family was concerned about the fate of her very special property which included many native tree species planted by Ken O'Dell, two lakes and tall grass prairie remnants.

It had been on our 2017 Garden Tour. Many of us helped weed and prune the gardens in preparation for Judy's memorial service on May 27. It was too far from the family business in Baldwin (Vinland Valley Nursery) for a family member to inhabit.

Would the purchaser be a developer or a destroyer? However, Judy's daughter, Amy Albright, was contacted almost immediately by the Mission Valley Hunt Club that owns significant adjoining acreage. They wished to purchase the property for horse riding and to preserve the remnant prairies. This was such a good match that the property never officially went on the market and closed on August 1st.

A member of the hunt club is living in the house, has repaired the barn and has adopted the one remaining feral cat that the family couldn't catch and relocate to Baldwin.

It is a happy ending that would please Judy.



The photo is of Ken (her husband) leading our Advanced Training on Judy's prairie in 2015.

Please like and follow the Marais des Cygnes EMGs on Facebook at www.facebook.com/mdcemg